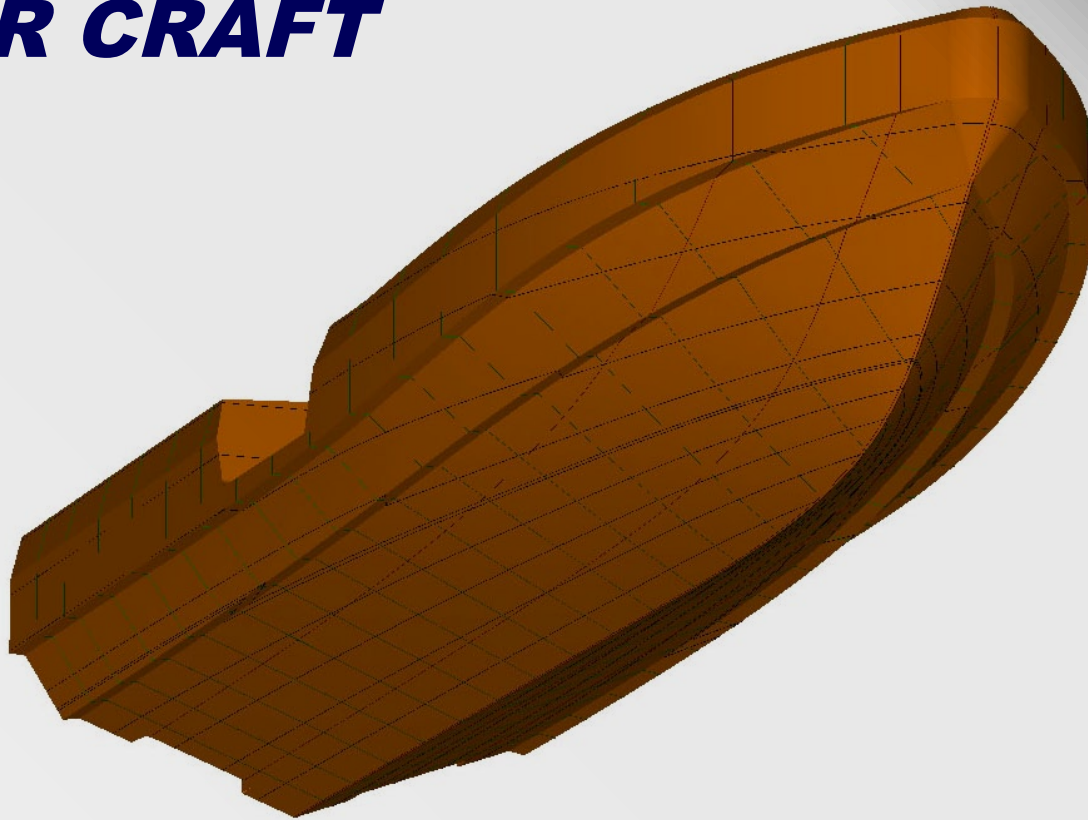


CAMARC HULL DESIGN for SAR CRAFT

• CAMARC DESIGN •
S A R B O A T S



- **Deep 'V' Double chine hull**
- **Supreme seakeeping**
- **Stable Platform**
- **Dry running**
- **Load tolerant**
- **Excellent resistance profile**
- **Alloy, G.R.P. or High Speed Steel construction**
- **Ideal for for Waterjet propulsion**

Operators Include

- *United States Coast Guard*
- *Turkish Rescue Service (KEGM)*
- *Malaysian Maritime Enforcement Agency*
- *Belgian Rescue Services*
- *Marseille Fire Department*
- *Martinique Airport*



The Camarc double chine hull form is the choice of experienced operators worldwide