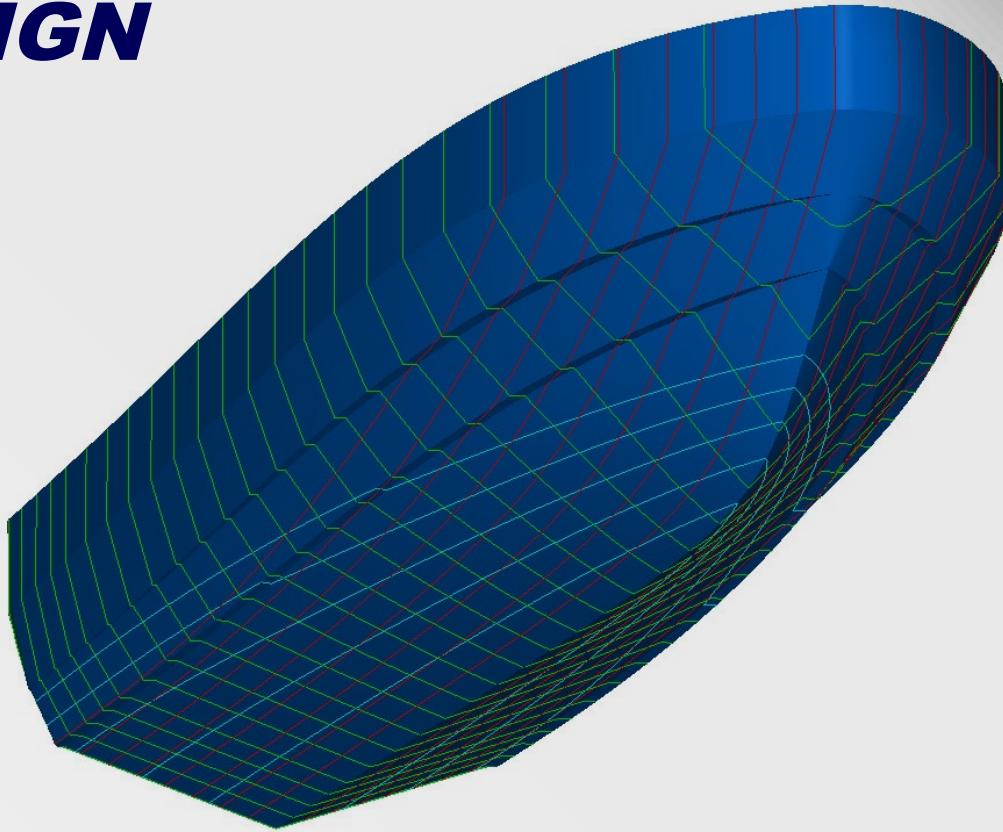


# CAMARC PILOT BOAT HULL DESIGN

• CAMARC DESIGN •  
PILOT BOATS



- **Supreme seakeeping**
- **Stable Platform**
- **Dry running**
- **Load tolerant**
- **Excellent resistance profile**
- **Alloy, G.R.P. or High Speed Steel construction**
- **Ideal for for both Propeller & Waterjet**

## **Operators Include**

- Dutch Pilots Association
- Columbia River Bar Pilots, USA
- Sandy Hook Pilots, New York
- Pacific Pilotage Authority, Vancouver
- Houston Pilots, USA
- Dubai Port Authority
- Sabine Pilots, Texas
- Savannah Pilots
- Milford Haven Port Authority, UK
- PD Teesport, UK
- Harwich Haven Authority, UK
- Bintulu Port Malaysia



**The Camarc double chine hull form is the choice of experienced operators worldwide**