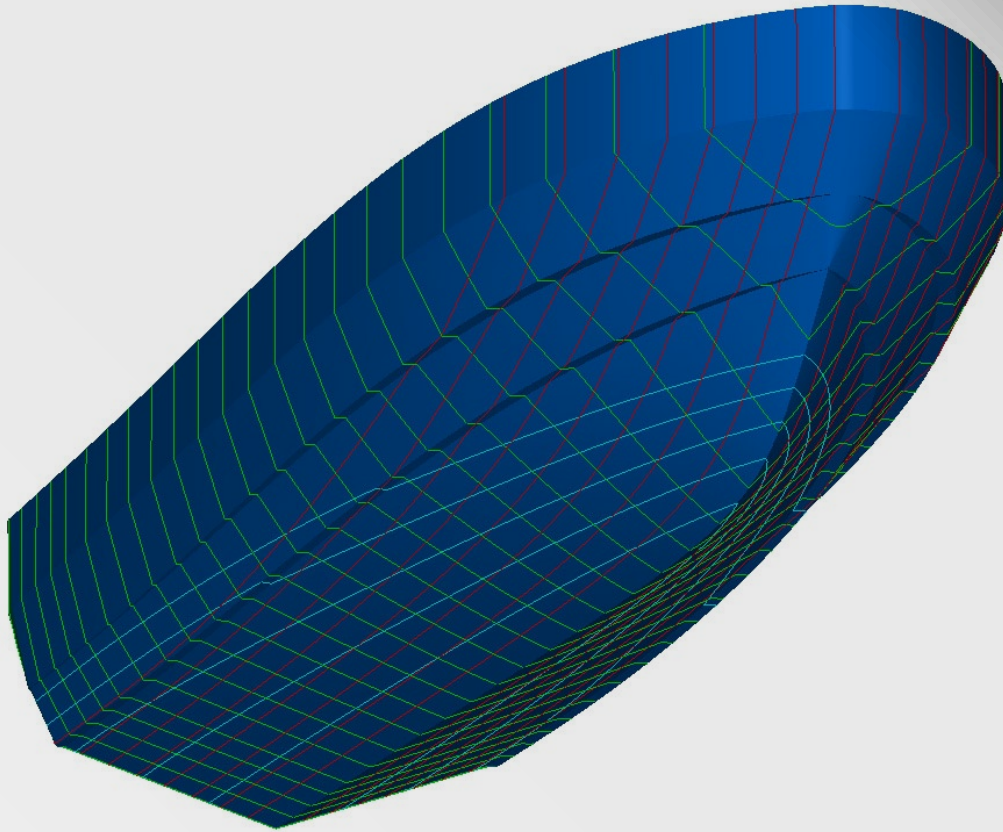


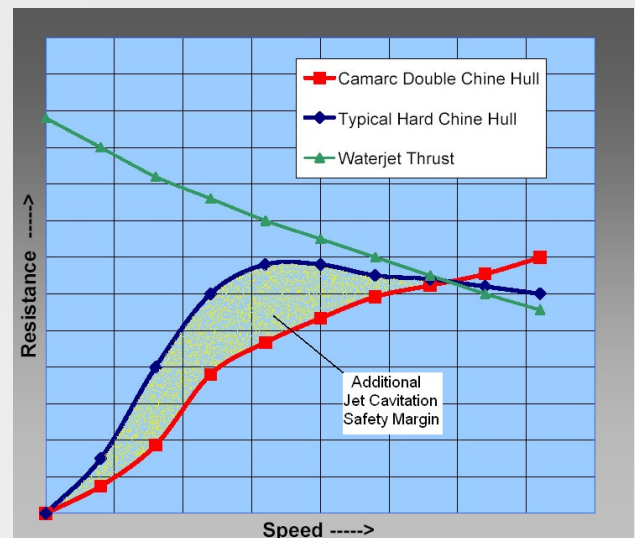
# CAMARC HULLS & WATERJETS

• CAMARC DESIGN •

PILOT BOATS



- **Supreme seakeeping**
- **Dry running**
- **Load tolerant**
- **Excellent resistance profile**
- **Suitable for Alloy or G.R.P. construction**



**The resistance profile of the Camarc double chine hull is excellent for waterjet propulsion. No significant 'hump' is produced allowing greater margin over the jet cavitation threshold.**

**The Camarc double chine hull form is the choice of experienced operators worldwide**